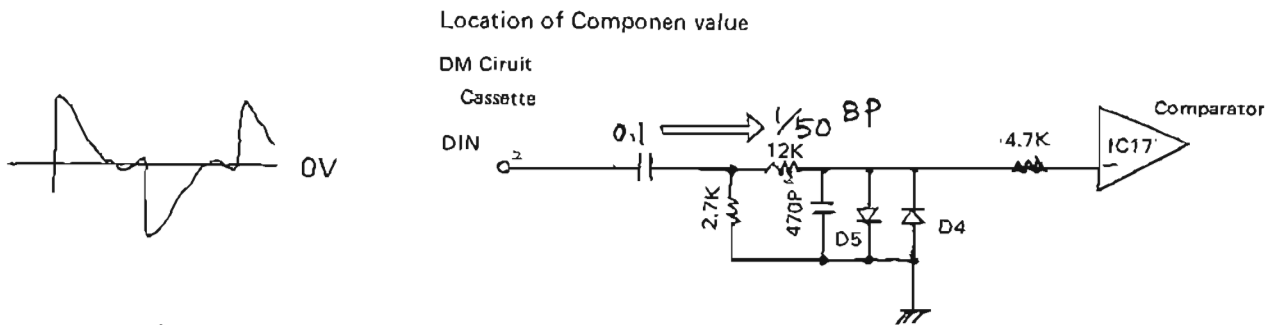




- \* Hardware change (Load Circuit Filter Characteristics change).

In some cassette tape recorders, when saving or loading, input signals are excessively differentiated and input signal wave-forms become as shown in the below figure. Hence these wave-forms reach the comparator threshold and errors occur. To prevent this trouble at most, the capacitance value will be changed and thus cut-off frequency will lower.



- **Parts:**

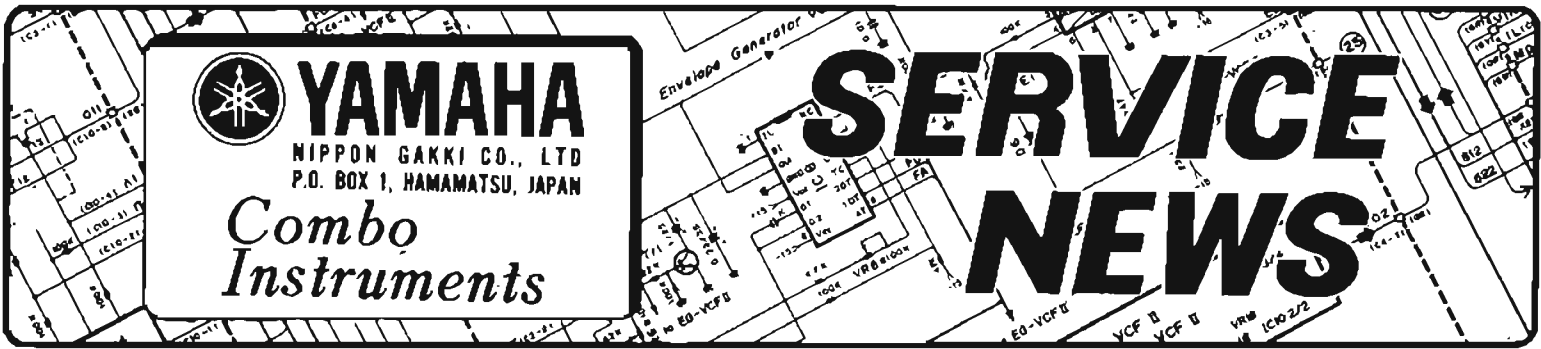
Part Name	Part No.	Version No.
System ROM	OLD	iN011110
	NEW	iN011120
Bipolar Capacitor 1 $\mu$ /50V	FM116100	

- **Servicing:**

When any above symptom is found out, change System ROMs and capacitors.

- **Application to production:**

S/# 4601 and up



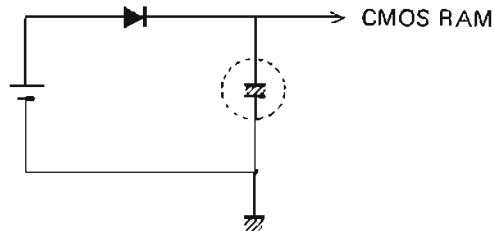
TX-7

BULLETIN NO. E-344

DATE: April, 1985

Use of Tantalum Capacitor in Back-up Circuit on DM Circuit Board

- *Purpose:*  
For reduction of leaking electric current.
- *Contents:*  
The mini-sized chemical capacitor, which is used in RAM back-up circuit driven by a lithium battery, will be replaced by a tantalum capacitor in order to reduce the leakage.



● *Parts:*

Part Name	Part No.
Tantalum Capacitor 10 $\mu$ /16V	FP337100

● *Application to production:*

S/# 6401 and up



**YAMAHA**

NIPPON GAKKI CO., LTD  
P.O. BOX 1, HAMAMATSU, JAPAN

*Combo  
Instruments*

# SERVICE NEWS

TX 7

BULLETIN NO.E-367

DATE : SEP. 1985

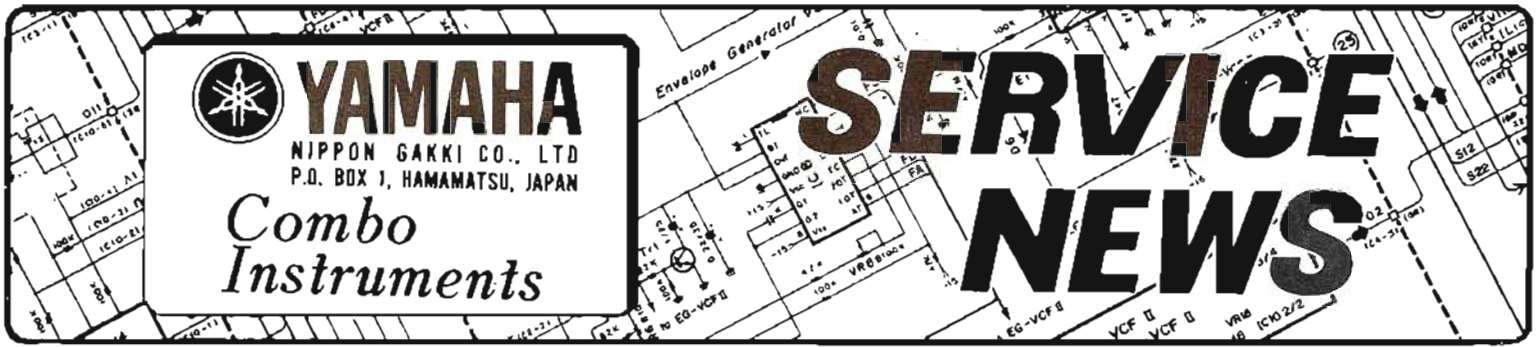
## CORRECTION OF PART NUMBER

Please make the following correction to your Service Manual.

PAGE 38

Ref No.	DESCRIPTION	INCORRECT	CORRECT
3	Toothed Lock Washer	EV410000	EV413036
20	LCD Module	NA814410	JN200060

correction of part number



TX7

BULLETIN NO.: E-368

DATE: February, 1986

ROM UPDATE

**ROM Ver. 1.3 (Part #: IN011130)**

The following functional problems were discovered in ROM Ver. 1.2 (IN011120) which was updated to Ver. 1.3 (IN011130).

- When going down in pitch with a glissando using a voice which has been transposed to C-sharp or to E, G or B-flat, the final note fails to descend to the intended note and instead stops at a note which is a semitone higher. This has been improved.
- Normally, when the MIDI cable is disconnected during use, the MIDI data should be initialized and sound production should stop. However, with ROM Ver. 1.2 when the MIDI cable is disconnected, the MIDI data is not initialized. And if the key on data is received without status, the TX7 conducts running status processing and produces sound. This has been improved.

**ROM Ver. 1.4 (Part #: IN011140)**

The following functional problem has been discovered in ROM Ver. 1.3 which has been updated to Ver. 1.4. There are a total of 38 TX7's which have the ROM Ver. 1.3, all of which were shipped to the domestic market.

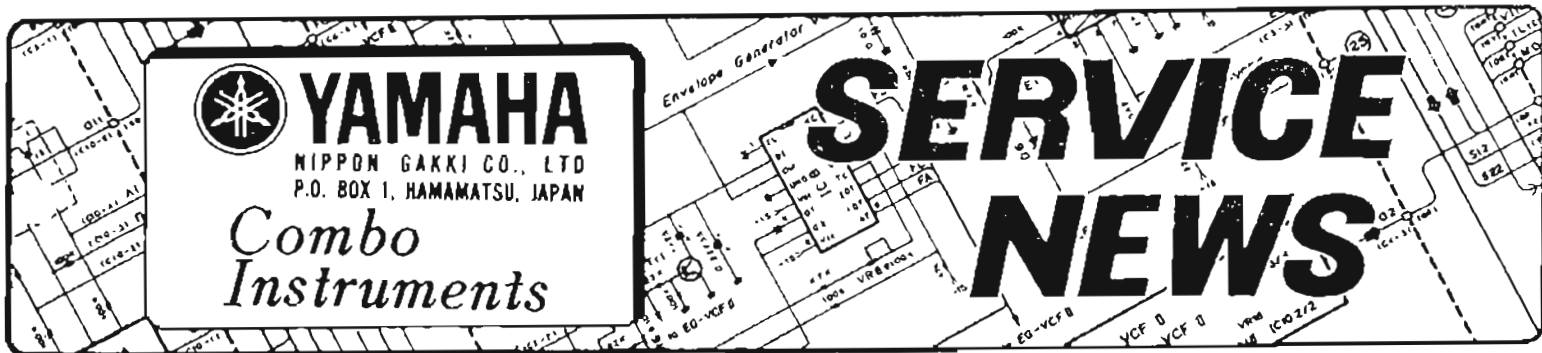
Serial numbers are as follows:

9984, 9989, 9992, 10014, 10021-10024, 10031, 10034, 10037, 10039,  
10050, 10055, 10056, 10067-10069, 10072-10074, 10079, 10082, 10084,  
10087, 10090, 10092, 10095, 10096, 10101-10104, 10119, 10121, 10125,  
10126, 10128

- When a DX7 and TX7 are connected with a MIDI cable and the voice is changed on either the DX7 or TX7 while holding down keys on the DX7, notes will continue to sound and the simultaneous notes (up to 16 notes) will be decreased if the transpose set is different for the voice before change and the voice after change.

This modification has been implemented on products with the following serial numbers:

10129 and up.



QX1, TX816, TX7

BULLETIN NO.: E-390

DATE: April, 1987

### Part Numbers for Accessories

Please add the following accessories, which are provided with the units, to your parts list.

Part #	Description
JM400030	Demonstration Disk for QX1
JM400040	Demonstration Disk for TX816 by QX1
JM130060	Performance Data Tape for TX7